

KEY CONTROL™ DEADBOLT

FEATURING **SMARTKEY**
RE-KEY TECHNOLOGY

PROVIDING ONE-KEY CONTROL FOR MULTI-FAMILY APPLICATIONS

Key Control

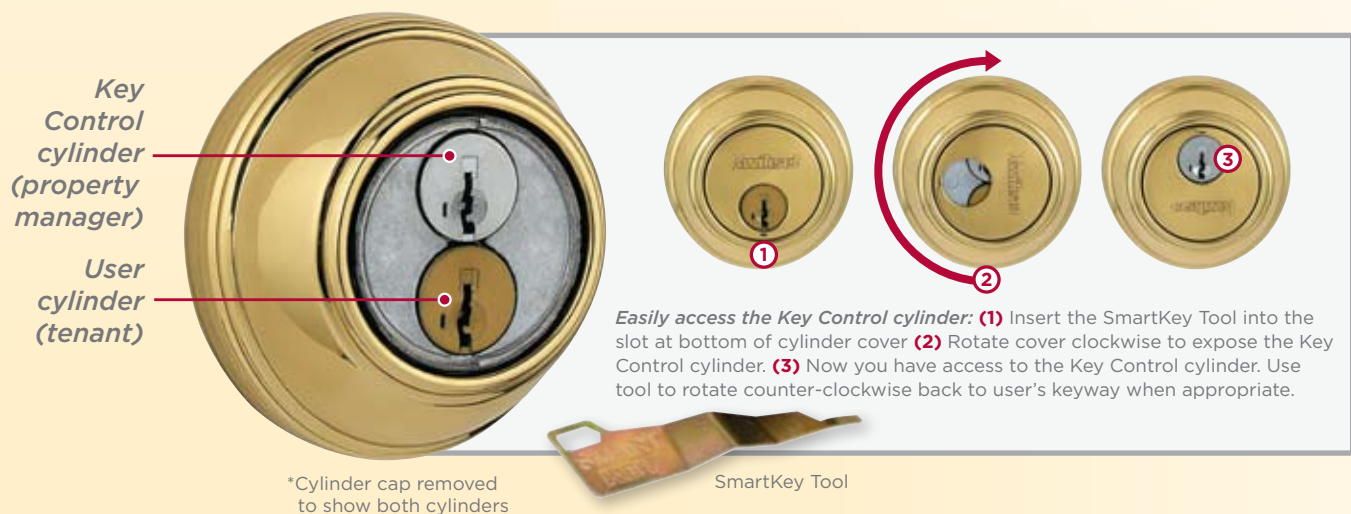
- Top concealed cylinder provides one-key control for the property manager
- Lower exposed cylinder allows unique user keys for the tenant
- Re-key your user or control cylinder at any time in seconds
- Maintain key control throughout tenant and employee turnover

Increased Efficiency

- Re-key the lock without removing from the door
- Save time & money by re-keying yourself



Perfect for multi-family dwellings, student housing, assisted living & rental properties.



THE SMART ALTERNATIVE TO MASTER KEYING

BOTH CYLINDERS FEATURE SMARTKEY® RE-KEY TECHNOLOGY

- 1a Concealed Key Control cylinder has a unique patented keyway to provide increased security. Simply rotate the cylinder cap to expose the cylinder for use.
- 1b User cylinder utilizes the traditional Kwikset keyway and keys.
- 1c Gear assembly enables both cylinders to lock or retract the deadbolt latch.

CERTIFIED GRADE 2 ANSI/BHMA SECURITY

BUMPGUARD™-

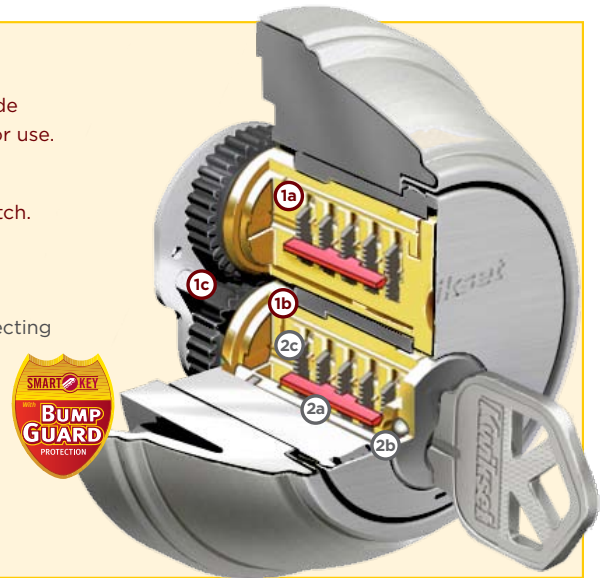
- 2a Patented side locking bar technology offers improved security by protecting against lock bumping, an attack on conventional pin & tumbler locks.

DRILL RESISTANCE-

- 2b Cylinder uses two steel balls inserted into the front of the key face to resist attacks from drilling.

PICK RESISTANCE-

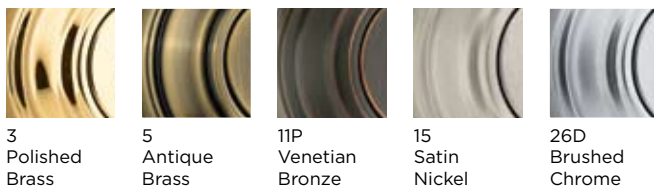
- 2c Superior SmartKey withstands the highest level of UL pick testing, the UL 437, Par. 11.6.



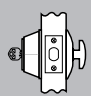
SPECIFICATIONS:

Standard Door Prep	Cross Bore 2-1/8". Edge Bore 1" Latch Face 1" x 2-1/4"
Door Thickness	1 3/8" - 1 3/4"
Cylinder	2 SmartKey® cylinders: 1 standard Kwikset for users, 1 unique patented keyway for 1-Key Control
Faceplate	1" x 2-1/4"
Strike	1 1/4" x 3-5/8"
Bolt	1" throw
ANSI/BHMA	A156.5 Grade 2
ADA	Interior turn piece meets 4.13.9 ADA
UL	Meets UL 3 hour fire rating for UL function. UL Ref# R10923

FINISHES:

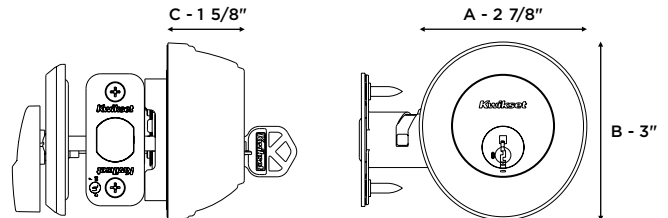


FUNCTIONS:






816 Key Control Deadbolt
817 UL Key Control Deadbolt
 Deadbolt operated by key outside and thumb turn inside.

DIMENSIONS:

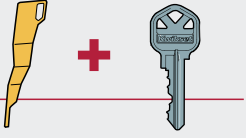


SMARTKEY®
 RE-KEY TECHNOLOGY

EASILY RE-KEY IN 3 SIMPLE STEPS:

-  1 Insert functioning key & turn 1/4 turn clockwise.
-  2 Insert & remove the SmartKey learn tool. Remove functioning key.
-  3 Insert new key and turn 1/2 turn counter-clockwise. Your lock is now re-keyed!

You must have your functioning key & your SmartKey tool for the system to work.



SmartKey Tool + Functioning Key